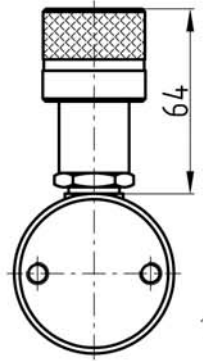
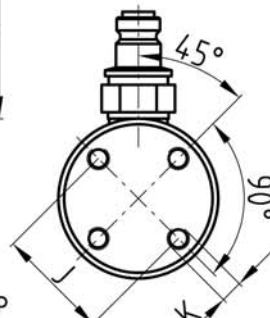


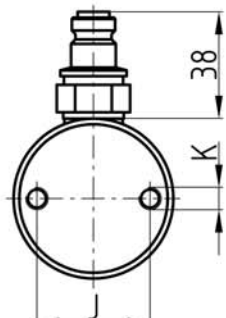
CFC1006P - CFC10010P



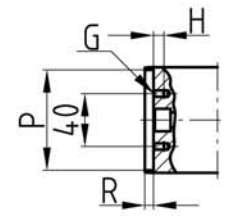
CFC502P - CFC5013P
CFC151P - CFC1514P
CFC251P - CFC2514P
CFC51P - CFC59P
CFC101P - CFC1014P



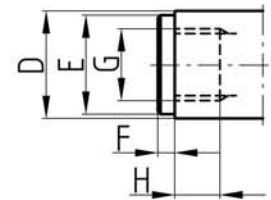
CFC1006 - CFC10010



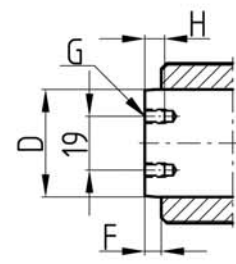
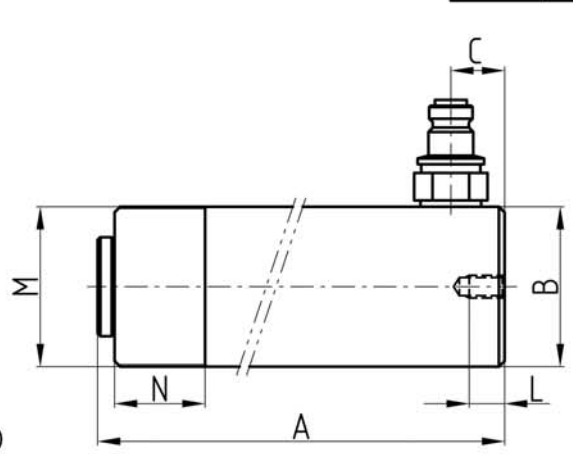
CFC502 - CFC5013
CFC151 - CFC1514
CFC251 - CFC2514
CFC51 - CFC59
CFC101 - CFC1014



CFC502 - CFC5013
CFC756 - CFC7513
CFC1006 - CFC10010



CFC51 - CFC59
CFC102 - CFC1014
CFC151 - CFC1514
CFC251 - CFC2514



CFC101

Modell	A mm	B Ømm	C mm	D Ømm	E Ømm	F mm	G	H mm	J mm	K	L mm	M	N mm	P Ømm	R mm	Vikt kg
CFC51	110	38	19	25,4	25	6	3/4"-16 UNF	16	25	1/4"-20 UNC	14	1 1/2"-16 UN	29	---	---	0,8
CFC53	165	38	19	25,4	25	6	3/4"-16 UNF	16	25	1/4"-20 UNC	14	1 1/2"-16 UN	29	---	---	1,2
CFC55	216	38	19	25,4	25	6	3/4"-16 UNF	16	25	1/4"-20 UNC	14	1 1/2"-16 UN	29	---	---	1,5
CFC57	273	38	19	25,4	25	6	3/4"-16 UNF	16	25	1/4"-20 UNC	14	1 1/2"-16 UN	29	---	---	1,9
CFC59	324	38	19	25,4	25	6	3/4"-16 UNF	16	25	1/4"-20 UNC	14	1 1/2"-16 UN	29	---	---	2,2
CFC101	90	57	19	38	35	3	10-24 UN	7	40	5/16"-18 UNC	12	2 1/4"-14 UN	27	---	---	1,5
CFC102	121	57	19	38	35	6	1"-8 UNC	17	40	5/16"-18 UNC	12	2 1/4"-14 UN	27	---	---	2
CFC104	171	57	19	38	35	6	1"-8 UNC	17	40	5/16"-18 UNC	12	2 1/4"-14 UN	27	---	---	2,7
CFC106	247	57	19	38	35	6	1"-8 UNC	22	40	5/16"-18 UNC	12	2 1/4"-14 UN	27	---	---	4
CFC108	298	57	19	38	35	6	1"-8 UNC	22	40	5/16"-18 UNC	12	2 1/4"-14 UN	27	---	---	4,6
CFC1010	349	57	19	38	35	6	1"-8 UNC	22	40	5/16"-18 UNC	12	2 1/4"-14 UN	27	---	---	5,3
CFC1012	400	57	19	38	35	6	1"-8 UNC	22	40	5/16"-18 UNC	12	2 1/4"-14 UN	27	---	---	6
CFC1014	451	57	19	38	35	6	1"-8 UNC	22	40	5/16"-18 UNC	12	2 1/4"-14 UN	27	---	---	6,8
CFC151	124	70	19	48	38	10	1"-8 UNC	17	48	3/8"-16 UNC	13	2 3/4"-16 UN	30	---	---	3
CFC152	149	70	19	48	38	10	1"-8 UNC	22	48	3/8"-16 UNC	13	2 3/4"-16 UN	30	---	---	3,5
CFC154	200	70	19	48	38	10	1"-8 UNC	22	48	3/8"-16 UNC	13	2 3/4"-16 UN	30	---	---	4,5
CFC156	272	70	25	48	38	10	1"-8 UNC	25	48	3/8"-16 UNC	13	2 3/4"-16 UN	30	---	---	6,5
CFC158	322	70	25	48	38	10	1"-8 UNC	25	48	3/8"-16 UNC	13	2 3/4"-16 UN	30	---	---	7,5
CFC1510	373	70	25	48	38	10	1"-8 UNC	25	48	3/8"-16 UNC	13	2 3/4"-16 UN	30	---	---	8,5
CFC1512	424	70	25	48	38	10	1"-8 UNC	25	48	3/8"-16 UNC	13	2 3/4"-16 UN	30	---	---	9,5
CFC1514	475	70	25	48	38	10	1"-8 UNC	25	48	3/8"-16 UNC	13	2 3/4"-16 UN	30	---	---	10,9
CFC251	140	85	22	60	50	10	1 1/2"-16 UN	25	59	1/2"-13 UNC	19	3 5/16"-12 UN	49	---	---	5,1
CFC252	165	85	22	60	50	10	1 1/2"-16 UN	25	59	1/2"-13 UNC	19	3 5/16"-12 UN	49	---	---	5,9
CFC254	216	85	22	60	50	10	1 1/2"-16 UN	25	59	1/2"-13 UNC	19	3 5/16"-12 UN	49	---	---	7,7
CFC256	273	85	22	60	50	10	1 1/2"-16 UN	25	59	1/2"-13 UNC	19	3 5/16"-12 UN	49	---	---	9,7
CFC258	324	85	22	60	50	10	1 1/2"-16 UN	25	59	1/2"-13 UNC	19	3 5/16"-12 UN	49	---	---	11,5
CFC2510	375	85	22	60	50	10	1 1/2"-16 UN	25	59	1/2"-13 UNC	19	3 5/16"-12 UN	49	---	---	13,3
CFC2512	426	85	22	60	50	10	1 1/2"-16 UN	25	59	1/2"-13 UNC	19	3 5/16"-12 UN	49	---	---	15
CFC2514	476	85	22	60	50	10	1 1/2"-16 UN	25	59	1/2"-13 UNC	19	3 5/16"-12 UN	49	---	---	17
CFC502	176	127	33	80	75	3	M6	8	95	M12	19	5"-12 UN	55	76	6,5	16
CFC504	227	127	33	80	75	3	M6	8	95	M12	19	5"-12 UN	55	76	6,5	19
CFC506	282	127	33	80	75	3	M6	8	95	M12	19	5"-12 UN	55	76	6,5	23
CFC5013	460	127	33	80	75	3	M6	8	95	M12	19	5"-12 UN	55	76	6,5	35
CFC756	282	146	29	100	75	5	M6	8	---	---	---	5 3/4"-12 UN	44	77	4,5	30
CFC7513	492	146	29	100	75	5	M6	8	---	---	---	5 3/4"-12 UN	44	77	4,5	48
CFC1006	359	175	41	100	75	5	M6	8	140	3/4"-10 UNC	24	6 7/8"-12 UN	54	77	4,5	54
CFC10010	450	175	41	100	75	5	M6	8	140	3/4"-10 UNC	24	6 7/8"-12 UN	54	77	4,5	65

4	Området	06-01-09	MN
Pos.	Ändring	Datum	Sign.

Material		Ämne, dimension		Värmebehandling		Yttrebehandling	
Tillåtna måttavvikelser där ej annat anges Bearbetade del. Gjutna del.				Smältsvetsade konstr. ent. SMS 723			
ent. SS-ISO-2768-1				ent. SMS 723			
Konstr.	Ritad	Titel		Produkt		Yttrebehandling	
Prod.gok.	Konstr.gok.	MN	05-12-05	CFC - CYLINDRAR		<input checked="" type="checkbox"/> E	
Skala				Ersätter			
1:1				C-403.41:-42:-43			
Benämning				Ersatt av			
REHOBOT				MÅTTITNING			
				B-403,41			